

Filling and delivery couplings for bottom loading



The adoption of the VOC directive introduced the “API” coupling for tanker bottom loading throughout Europe.

The European standard EN 13083 (as well as prEN 13315 for the delivery adapter) is based on the American “API” coupling RP 1004 (API = American Petroleum Institute).

This standard ensures that every tank vehicle can be filled at any filling location!

The **filling and delivery adaptors** from Alfons Haar are designed and constructed according to the new standard EN 13083 and prEN 13315!



The following applies to all couplings:

- Nominal pressure 10 (tested at 80 bar!)
 - the standard only requires PN 5 and a testing pressure of 25 bar
- Short overall length, TW 3 flange or for TTMA
- Symmetrical design with low residues: 130 ml
- Low pressure loss for high performance delivery!
- Replaceable front ring:
 - bronze for extra long service life (for type ... 1-) = standard
 - stainless steel for aviation fuel (for type ... 1A)
- Pressure-resistant sight glass, integrated, tested up to 50 bar!
- Optional dry sensor
- Optional integrated magnet sensor (for type ... OM) to indicate closed-open state
 - for Sealed Compartment Delivery System (SCDS)
 - valve seals until the sensor registers opening
- TÜV-certified component codes: TÜ.AGG.342-01, TÜ.AGG.234-95, TÜ.AGG.232-95, TÜ.AGG.154-92 for use according to ADR B1A, ADR 2001, Chapter 6.8

Filling and delivery couplings for bottom loading



A wide range of models and variants are available to suit the application:

MAPI Filling and delivery adaptor with manual lever activation according to EN 13083

Manual lever is also the position indicator

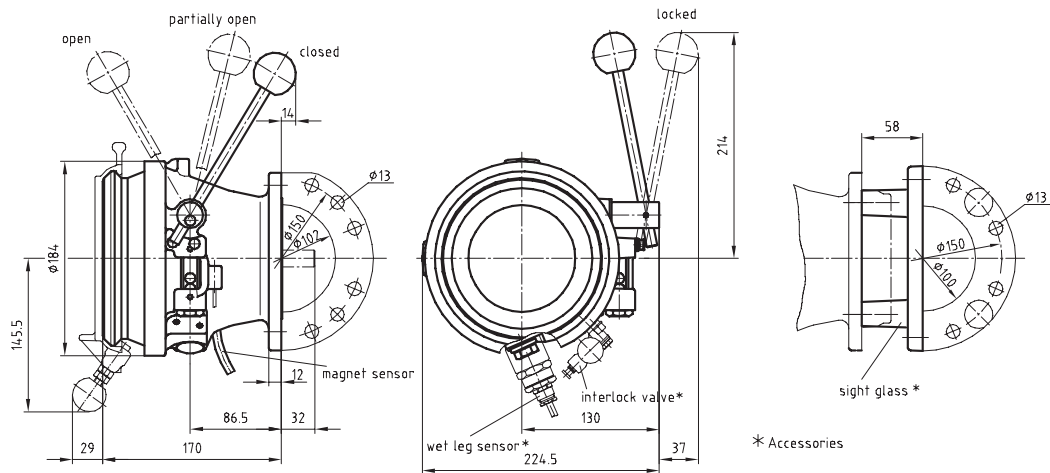


Available variants:

Variant	Description	part no.	complete with cap
MAPI 100 B1-O	without sight glass	1712710	1715581
MAPI 100 B1-S	with sight glass	1712698	1715590
MAPI 100 B1-SL	with sight glass and thread for LMS	2100478	2100485
MAPI 100 B1A-O	without sight glass, for aviation fuel	1712728	1715603
MAPI 100 B1A-S	with sight glass, for aviation fuel	1712701	1715913
MAPI 100 B1-OM	without sight glass, with magnet sensor for SCDS systems	1712485	1715921

TÜ.AGG.342-01

Weight: 4,9 kg 5,5 kg



API Filling adaptor

Discharge via adapter with opening lever

according to EN 13083

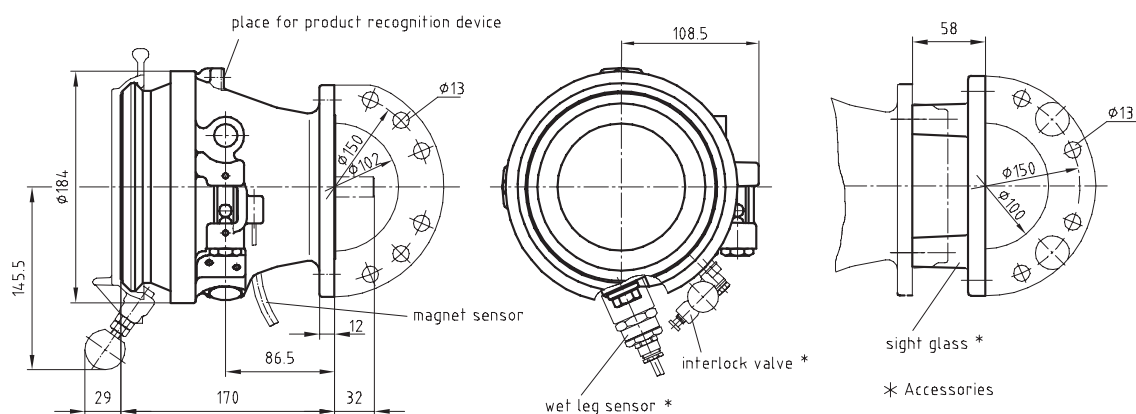


Available variants:

Variant	Description	part no.	complete with cap
API 100 E1-O	without sight glass	1712752	1715530
API 100 E1-OL	without sight glass, with thread for LMS	2128759	2128766
API 100 E1-S	with sight glass	1712736	1715549
API 100 E1-SI	with sight glass and position indicator	1716537	1728748
API 100 E1A-O	without sight glass, for aviation fuel.	1712779	1715557
API 100 E1A-S	with sight glass, for aviation fuel.	1712744	1715565
API 100 E1-OD	without sight glass, for product bracket	1712760	1715573
API 100 E1-OM	without sight glass, with magnet sensor for SCDS systems	1712493	1715522

TÜ.AGG.342-01

Weight: 4,5 kg 5,1 kg



Filling and delivery couplings for bottom loading



PAPI Filling and delivery adaptor

according to EN 13083



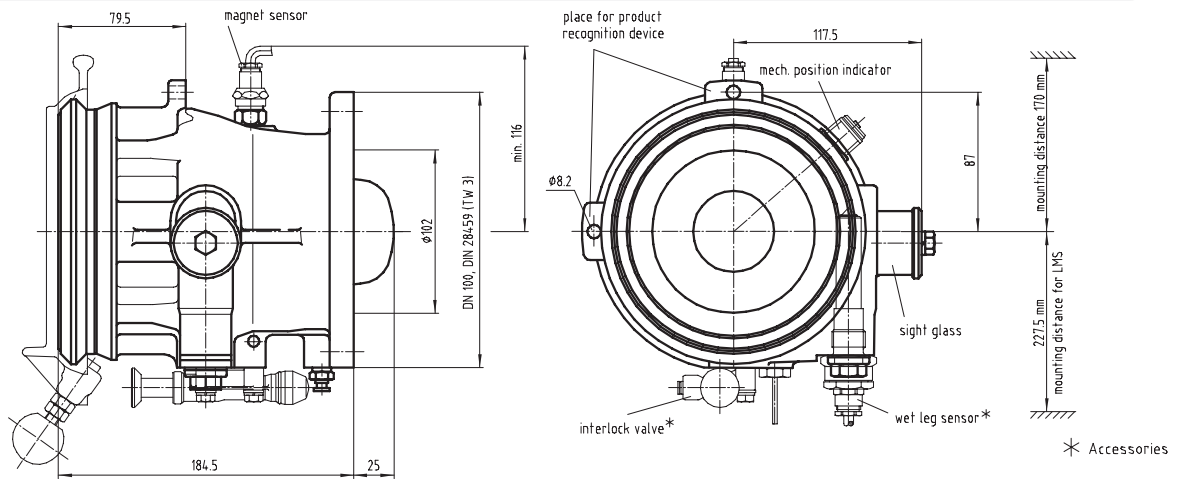
With pneumatic activation, pressure relief, able to shut against volumetric flow, actuator for filling protector.

Available variants:

PAPI 100 B1	with sight glass	part no. 1339946
PAPI 100 B1 SA	with sight glass and position indicator	part no. 1354228
PAPI 100 B1 MA	with sight glass and mit magnet sensor for SCDS	part no. 1373400

TÜ.AGG.234-95

Weight: 5,0 kg



APIA Delivery coupling

according to prEN 13315



For connecting to all API, type 1004, adaptors

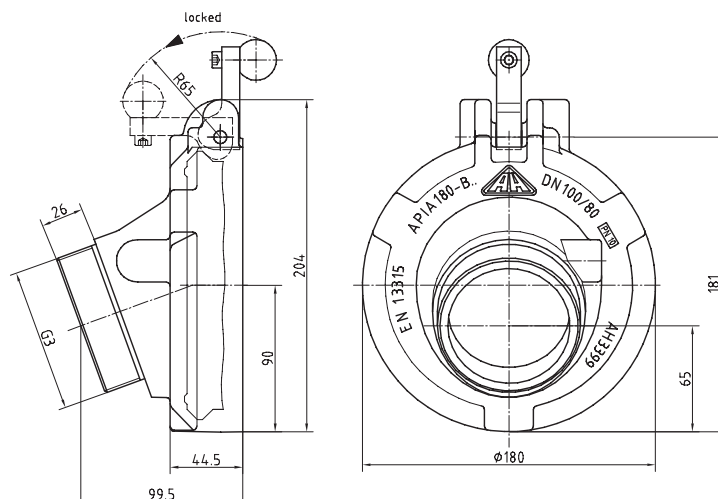
Thread R 3" AG

APIA 100 B1

part no. 1668176

TÜ.AGG.154-92

Weight: 1,1 kg



Filling and delivery couplings for bottom loading



Accessories:

CAPI sealing cap

Pressure sealing cap up to 0.2 bar
Single-handed operation
Fastening cable included
TÜ.AGG.232-95
CAPI B1

part. no. 1374610



Interlock valve

Activation via filling coupling
PMWV 3/2 D1

part. no. 1370630



Mounting support

(required for API..., MAPI...)

part. no. 1700584

Sensor for product code

Reads the magnetic code of the filling coupling

part. no. 1609200

(for API 100 E1-OD and PAPI 100 B1)



Wet leg sensor

LMS 1AA wet leg sensor
Use for type with thread for LMS
Required threaded spacers
L = 14
L = 28

part. no. 2067347

part. no. 1338060
part. no. 1338079



Sight glass

SG 100 A1-4TW
Nominal pressure PN 10 bar

part. no. 1633224



Weld-on flange

Material: weldable aluminum
For pipe DN 100

part. no. 1141690

